

Welcome

to ExtremeZ-IP.

This guide provides the essential steps for setting up ExtremeZ-IP. For detailed File and Print Server configuration instructions, see the ExtremeZ-IP Users Manual PDF. You can find this manual in the ExtremeZ-IP program folder.

If you are installing on a cluster, please refer to the post-installation steps in the manual.

Copyright©1999 - 2010 Group Logic, Incorporated All Rights Reserved.

Group Logic™ and the Group Logic logo are registered trademarks of Group Logic, Inc..

All other trademarks are the property of their respective owners.

Before You Begin

Verify your server meets the requirements for ExtremeZ-IP listed on the next page.

It is recommended you quit any running programs, including the Services control panel, before starting the installation.



ExtremeZ-IP System Requirements

The following are the minimum system requirements for ExtremeZ-IP File and Print Server. The recommended system requirements for a particular implementation or application can vary so please consult with the ExtremeZ-IP support team (support@grouplogic.com) if you have questions or need assistance.

Windows Server Platforms: 2008, 2003, Windows Storage Server, Windows Powered NAS

Windows Professional Platforms: Windows 7, Vista, XP Pro, XP Embedded

Minimum Hardware Recommendation:

Processor: Pentium III

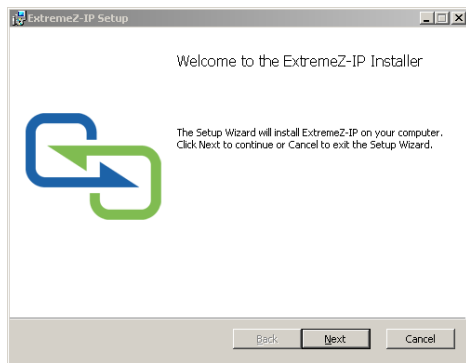
Memory: 512MB

Installing ExtremeZ-IP

1. Run the ExtremeZ-IP Installer.

To install ExtremeZ-IP you must log in to Windows with Administrator privileges.

2. Click **Next** to begin the installation.



3. Accept the Software License Agreement and click **Next**.
4. Click **Next** to accept the default Destination Folder.
5. Click **Install** to begin installation.

If you have a previous version of ExtremeZ-IP installed, it will be upgraded to the new version.

Don't worry, any existing settings will be retained.

6. Click **Finish** to close the completed installer and automatically launch the ExtremeZ-IP Administrator.

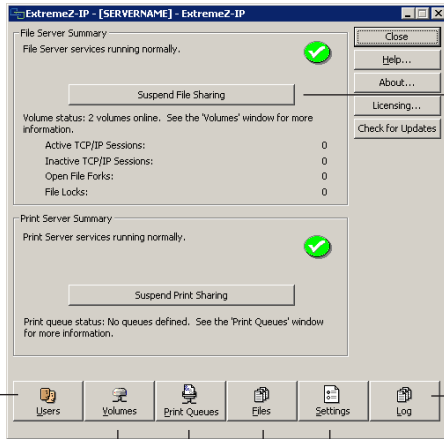
First Run / Installing Your License

1. When first run, ExtremeZ-IP will ask if you would like to enable the Print Server, choose **Yes** or **No**.
2. New ExtremeZ-IP installations default to Trial mode. If you have an ExtremeZ-IP serial number, click **Licensing** and then click **Add License** to add your serial number.
3. If you upgraded a previous version of ExtremeZ-IP, it will continue to use your existing serial number.

Configuring Your First Shared Volume

1. Launch ExtremeZ-IP Administrator.

The first time the ExtremeZ-IP Administrator is opened, it will prompt you to create shared volumes or migrate your existing SFM and SMB shares to ExtremeZ-IP. This can also be done any time from within the Volumes window.



Disconnect all clients and prevent new connections to the server.

Display a list of the connected users.

View ExtremeZ-IP related events from the Windows Event Viewer.

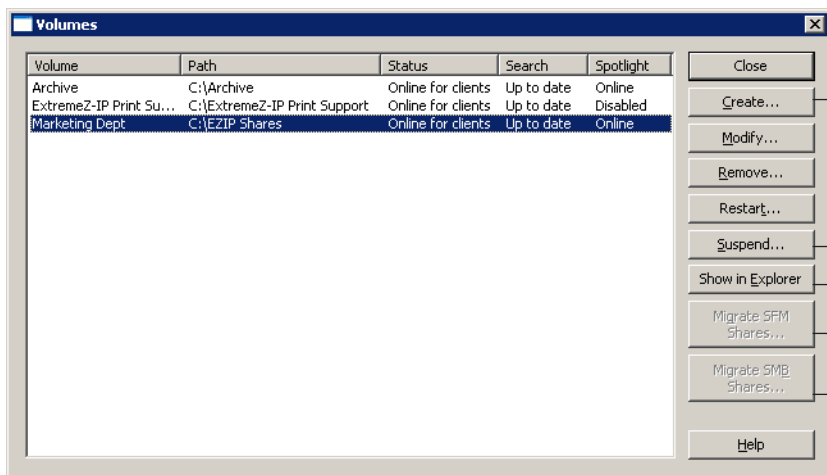
Create or configure shared volumes.

Create or administer Print Queues.

Display currently open files used by Macintosh clients.

Edit ExtremeZ-IP settings.

2. Click **Volumes**. The Volumes window will appear.



Create a new shared volume from a folder.

Take a volume temporarily offline so that clients cannot connect to it.

Open the parent folder of the volume in Windows Explorer.

Migrate volumes that were originally created in Microsoft Services for Macintosh (SFM) to ExtremeZ-IP volumes.

Reshare all folders shared with Windows file sharing (SMB) with ExtremeZ-IP as well.

3. Click **Create** to create a new volume. The Volume Properties window appears.

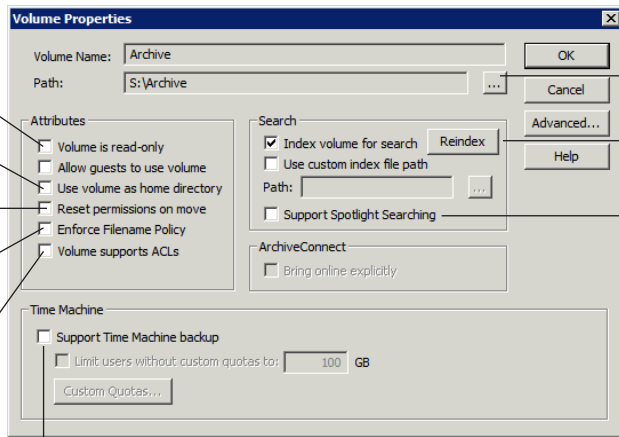
Prevent writing to the volume.

Filter out all directories except for a user's home directory.

Resets the permissions on moved files and folders to inherit from the destination folder.

Enforces the filename policies that are defined in the global settings.

ACL support allows Mac OS X 10.4 and later clients to use Windows Access Control Lists.



Choose path of the folder to share.

Create a file name index that speeds up searches.

Enable Spotlight searching of file attributes and content

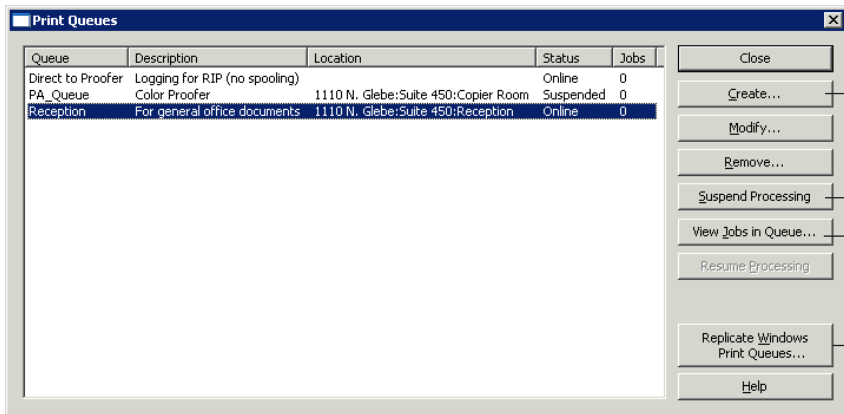
Advertises the volume to Time Machine clients.

4. Browse to the path of the folder you want to share.

5. Click **OK** to share the volume with ExtremeZ-IP.

Configuring Your First Shared Print Queue

1. Click **Print Queues** in the Administrator main window.
The Print Queues window will appear.



Create print queues.

When a queue is suspended jobs are accepted by the server however they are not sent to the printer until processing is resumed.

Open a window with a list of the pending jobs that allows you to start, stop, or reorder the print jobs.

Takes the existing Windows print queues and republishes them as ExtremeZ-IP queues.

2. Click **Create** to create a new Print Queue.
3. Enter a **Name** for the Print Queue.
4. Select a **Processing** method and enter the information required for the selected processing method.
5. Click **OK**.

Whether the print queue should be discoverable by clients.

The PPD to be used by clients when printing to this queue.

The screenshot shows the 'Print Queue Properties' dialog box. The 'Name' field contains 'Reception'. The 'Description' field contains 'For general office documents'. The 'Location' field contains '1110 N. Glebe:Suite 450:Reception'. The 'Publish queue' checkbox is checked. The 'Output Method' dropdown is set to 'Send to LPR Print Queue'. The 'PPD' file path is 'C:\ExtremeZ-IP Print Support\EZIPSample.PPD'. The 'Require client validation codes' checkbox is unchecked.

The name that you will see when you print from a Macintosh.

Where ExtremeZ-IP will send the jobs after they are received.

Require the Macintosh client to supply job tracking information every time they print to this queue (refer to the ExtremeZ-IP manual for additional configuration).

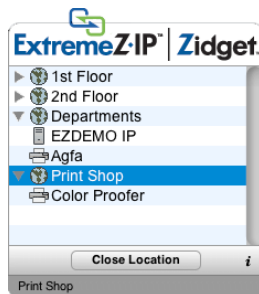
That's It!

The ExtremeZ-IP server is set up and Macintosh clients can connect to the volume and printer you configured.

The Optional ExtremeZ-IP Zidget™

If you would like to your Mac users to be able to take advantage of the optional ExtremeZ-IP Zidget™, you may need to add a DNS entry for ExtremeZIPServerList.your-domain.com that points to the ExtremeZ-IP server. More detailed instructions can be found in the manual.

Your users will then be able to install the Zidget from <http://ExtremeZIPServerList:8081> to browse for printers and file servers through this simple Dashboard widget.



Additional Resources

Please refer to the ExtremeZ-IP Manual for more information about how to configure additional features such as:

File Name Policies – Policy enforcement keeps files that break naming policies out of important workflows, delivers improved compatibility between Macs, Windows and other platforms all without Administrator intervention.

DFS Support – ExtremeZ-IP can be configured to make a Microsoft Distributed File System (DFS) available to Mac OS X 10.5 or later clients.

Network Spotlight – Use the Mac's Spotlight search to deliver nearly instant full-content file search results.

ShadowConnect – Mac users can access and restore previous versions of files and folders from Microsoft Volume Shadow Copy Service.

For more advanced configuration refer to the additional resources below.

Download the Latest Release:

<http://www.grouplogic.com/files/glidownload/ezipreleases.cfm>

Read the Manual:

<http://www.grouplogic.com/files/ez/EZIPManual.pdf>

Submit a Support Request:

<http://www.grouplogic.com/support/requestform/>

Search the Knowledgebase:

<http://www.grouplogic.com/knowledge/>